

Technology – Software and Storage

Accessing Microsoft 365 Suite/OneDrive

- 1 Login to Connect < <https://connect.det.wa.edu.au/> > and go to your email.



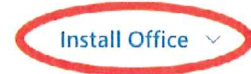
- 2 Click on the waffle icon () in the top left hand corner.



- 3 Click on Office 365 in the top right.



- 4 Click on the Install Office button and then select Office 365 apps.



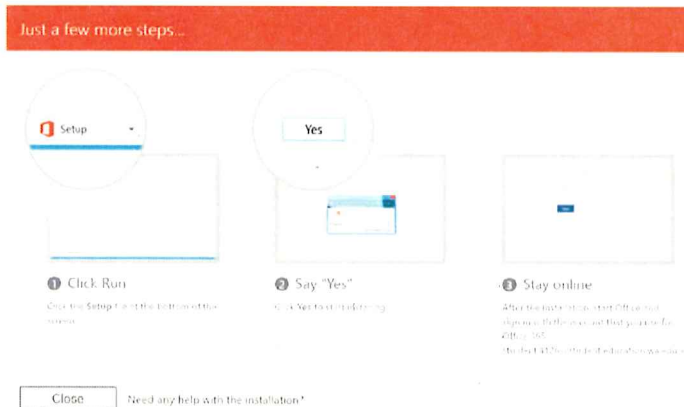
Apps



↓ Office 365 apps
Includes Outlook, OneDrive for Business, Word, Excel, PowerPoint and more.

→ Other installation options
Select a different language or install other apps available with your subscription.

- 5 A window like the one below will pop up so just follow the instructions.



- 6 This is the last window that will appear. Just wait for the installation to complete and you're finished.



Please stay online while Office downloads

We'll be done in just a moment



You also have access to
1TB of OneDrive storage.

You can download
OneDrive from:

<https://www.microsoft.com/en-au/microsoft-365/onedrive/download>

Once installed just login
with your school email
address.